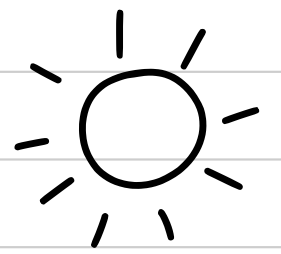


What is GT?

GT is a program that serves students who have high achievement capability, are quick learners, and need an instructional challenge. In Katy ISD, students identified for the Gifted and Talented program get pulled out for one full day a week to the Challenge Classroom.



How can I request screening?

Fill out a Parent Checklist using the Gifted and Talented tile in the Parent

Portal. The parent portal can be found at <https://launchpad.classlink.com/katyisd>

All testing is done on campus by district proctors.

Submission Deadline By Grade Level

Grade 5	September 5
Kinder	September 27
Grades 1-4	October 25
Tile is currently open	

Need More Information?

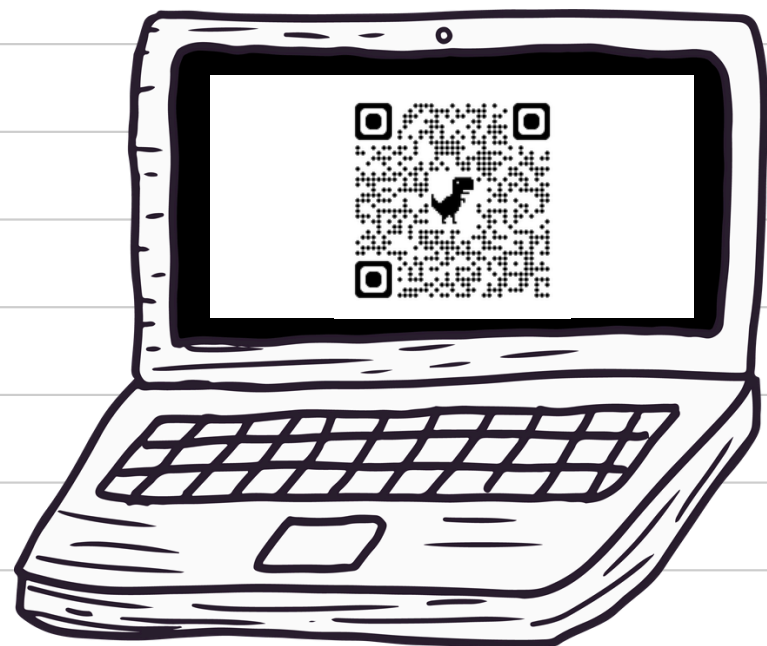
Please join the district information sessions that will be via TEAMS on the dates below:

GT Awareness for:

Kindergarten September 10

Grades 1-11 October 16

Grade 5 KAP/AP December 12



The QR code will take you to the KISD Parent Portal.

**NO LATE
SUBMISSIONS
WILL BE
ACCEPTED**



Karen Cooper



Karendcooper@katyisd.org



katyisd.org/Page/4167